

August 14-17, 2015
SWBAT: Explain
classroom policies and
procedures.

AGENDA

Bellwork (10-15 minutes)

Policies & Procedures
(20 minutes)

Intro. Quick Daily
(5 minutes)

Expectations (20 minutes)

Speedtalk

Strategies (15 minutes)

Peace/Out (5 minutes)

RELATIONSHIPS

WELCOME BACK!

Please take this paper and fill out to the best of your ability. By yourself first.

Name _____ Date _____
Period _____

DAY 1

Please answer these questions to the best of your ability. No looking at your cell phone. Seriously. I will break into four groups when everyone in the class is done. I'll know you are done because you are looking at me.

1. On a standard traffic light, is the green on the top or bottom?
2. How many states are there? (don't laugh, some people don't know)
3. In which hand is the Statue of Liberty's torch?
4. What six colors are on the classic Campbell's soup label?
5. What two letters don't appear on the telephone dial? (no cheating!)
6. What two numbers don't have letters by them?
7. When you walk does your left arm swing w/ you right or left leg?
8. On our flag, is the top stripe red or white?
9. Which way does water go down the drain, counter- or clockwise?
10. Which way does a "no cell phone" sign's slash run?
11. Which side of a women's blouse are the buttons on?
12. On a NE license plate, is Nebraska on the top or bottom?
13. Which way do fans rotate?
14. Whose face is on a dime?
15. How many sides does a stop sign have?
16. Do books have even # pages on the right or left side?
17. How many sides are there on a standard pencil?
18. Sleepy, Happy, Sneezzy, Grumpy, Dopey, Doc. Who's missing?
19. On the back of a dollar bill, what is in the center? (don't cheat)
20. How many curves are in a standard paper clip?

August 14-17, 2015

RELATIONSHIPS

**SWBAT: Explain
classroom policies and
procedures.**

AGENDA

Bellwork (10-15 minutes)

**Policies & Procedures
(20 minutes)**

**Intro. Quick Daily
(5 minutes)**

Expectations (20 minutes)

Speedtalk

Strategies (15 minutes)

Peace/Out (5 minutes)



August 14-17, 2015

RELATIONSHIPS

SWBAT: Explain classroom policies and procedures.

Annotation Nation

AGENDA

Bellwork (10-15 minutes)

**Policies & Procedures
(20 minutes)**

**Intro. Quick Daily
(5 minutes)**

Expectations (20 minutes)

Speedtalk

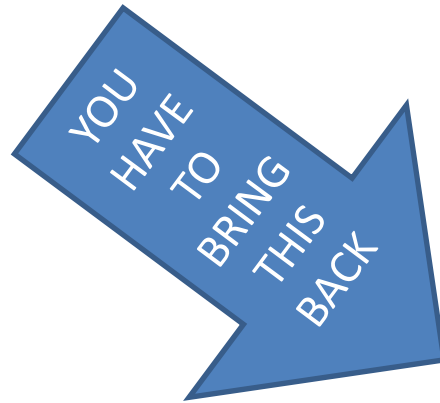
Strategies (15 minutes)

Peace/Out (5 minutes)



August 14-17, 2015

SWBAT: Explain classroom policies and procedures.



AGENDA

Bellwork (10-15 minutes)

Policies & Procedures (20 minutes)

Intro. Quick Daily (5 minutes)

Expectations (20 minutes)

Speedtalk

Strategies (15 minutes)

Peace/Out (5 minutes)

RELATIONSHIPS

English 3-4

Pam Homan
Room 103
pam.homan@ops.org
402-537-3200

ENGLISH TEACHER
LOUVER THAN A BOMB SPONSOR
Providence College, B.A. English
College of Saint Mary, M.A. Teaching

Class Goals

Students will spend time reading, writing, and discussing various themes and ideas in an effort to gain a further understanding of themselves and the world around them. Coming from a Liberal Arts college, I do a LOT of cross curricular work.*

* please see Course Registration Guide for formal description of the class.

Students will prepare for various State and district exams. Additionally, the course includes a review of concepts needed for the PSAT, SAT and ACT tests.

Class Goals

The class will examine common themes within sophomore literature by quarter:

- Q1: Relationships
- Q2: Culture
- Q3: Responsibility
- Q4: Integrity and Honor

Methods

to achieve goals

In addition to daily reading and writing, students will be expected to take part in academic research, literature circles, collaborative projects, and vocabulary study. All students will be asked to be active participants in their academic success.

Late work ONLY ACCEPTED UNTIL UNIT CLOSSES

Redoing/Revising is part of the learning process. Assuming work was turned in as requested, students can submit revisions until the unit closes. Revision scores will replace original scores when beneficial to the student.

MAKE UP WORK POLICY

Website	Card	DUE DATE
PPT/HANDOUT UNDER SPECIFIC CLASS	"I WAS MISSING" FOLDER	FOLLOWING CLASS PERIOD

BREAKFAST CLUB STARTS AT 6:45AM / ROOM 103 "It'll be anarchy."

RELATIONSHIPS

August 14-17, 2015

**SWBAT: Explain
classroom policies and
procedures.**

People Judge...

AGENDA

Bellwork (10-15 minutes)

**Policies & Procedures
(20 minutes)**

**Intro. Quick Daily
(5 minutes)**

Expectations (20 minutes)

Speedtalk

Strategies (15 minutes)

Peace/Out (5 minutes)



RELATIONSHIPS

August 14-17, 2015

SWBAT: Explain classroom policies and procedures.

AGENDA

Bellwork (10-15 minutes)

**Policies & Procedures
(20 minutes)**

**Intro. Quick Daily
(5 minutes)**

Expectations (20 minutes)

Speedtalk

Strategies (15 minutes)

Peace/Out (5 minutes)



August 14-17, 2015

RELATIONSHIPS

**SWBAT: Explain
classroom policies and
procedures.**

AGENDA

Bellwork (10-15 minutes)

**Policies & Procedures
(20 minutes)**

**Intro. Quick Daily
(5 minutes)**

Expectations (20 minutes)

Speedtalk

Strategies (15 minutes)

Peace/Out (5 minutes)



Homan Rules

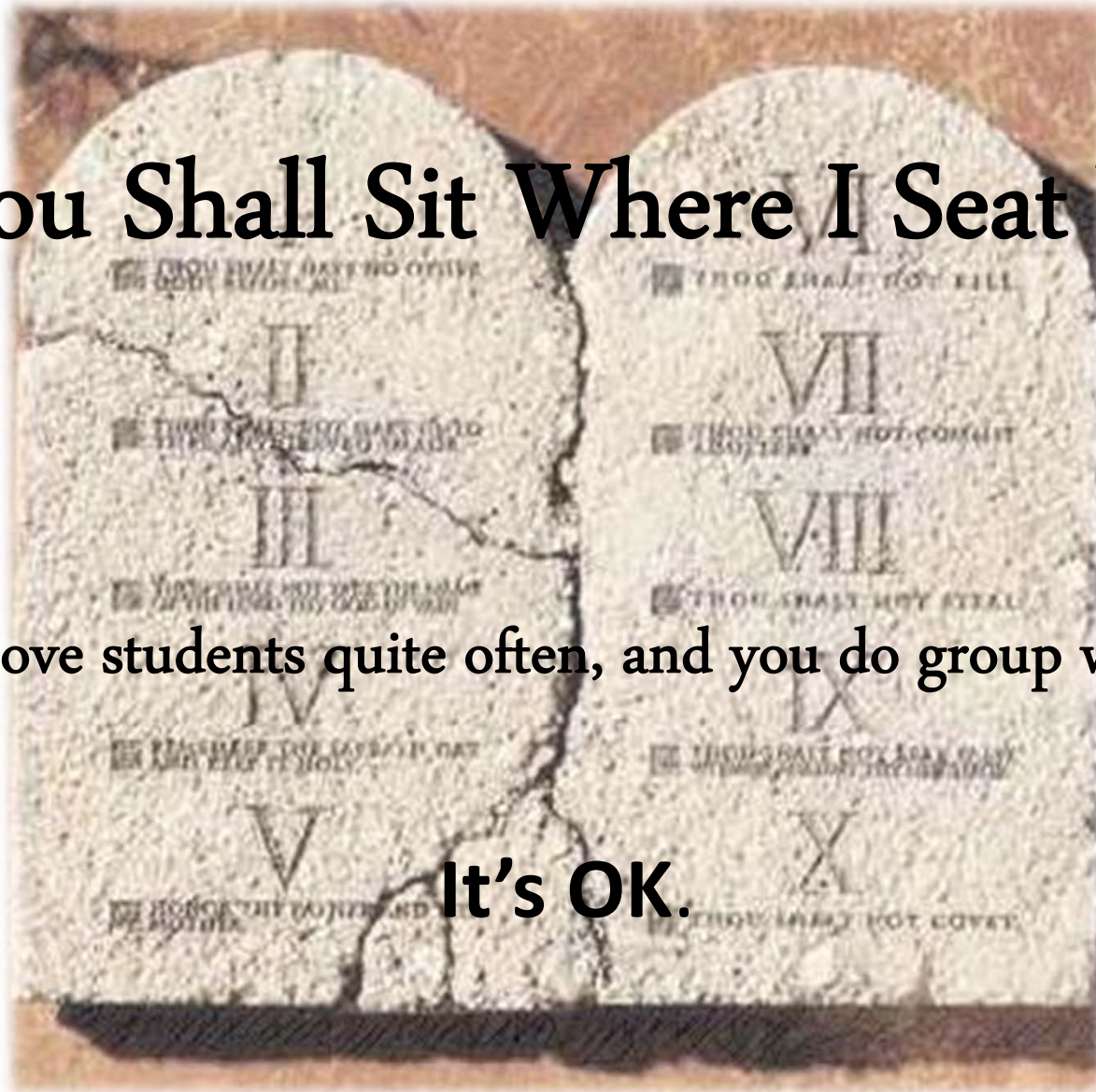
A Lesson on Behavior—
Not Awesomeness

And the Teacher said...

Thou Shall Sit Where I Seat You

I move students quite often, and you do group work.

It's OK.



I'm OK...You're OK



✓ *On Time*

✓ *On Task*

✓ *EVERY DAY*

Pride and Prejudice

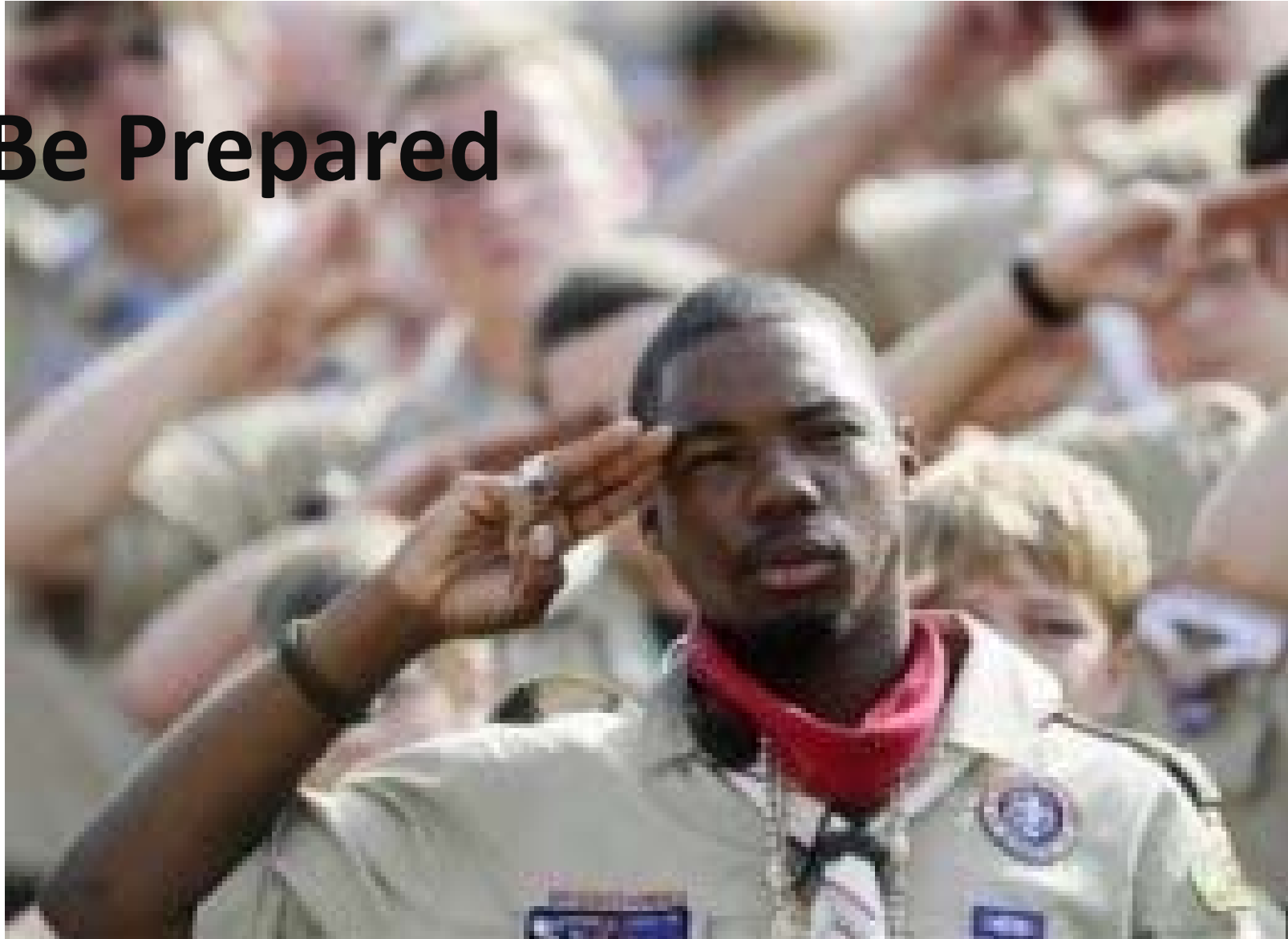
Number 1 Rule

R-E-S-P-E-C-T



Be All That You Can Be

Be Prepared



Great Expectations

PLAY LIKE
A CHAMPION
TODAY

Much Ado About Nothing

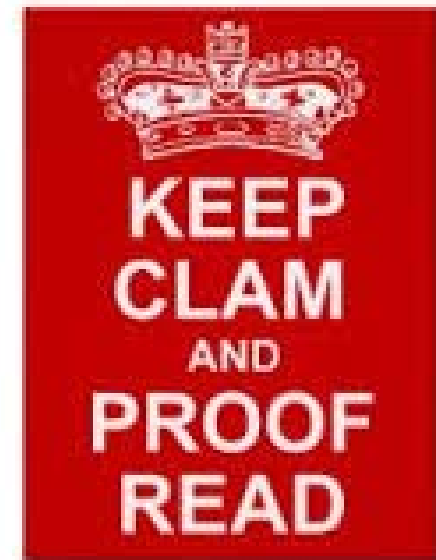
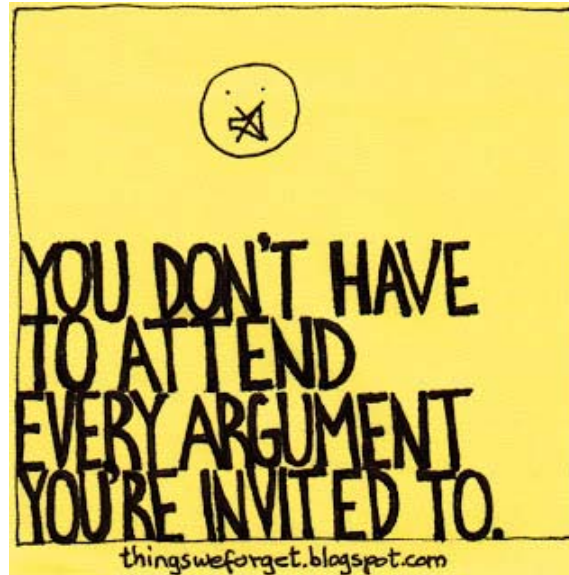


Number #1 Rule?

[Slide 6](#)

Random

FAIR
IS WHERE
YOU GET
COTTON
CANDY



August 14-17, 2015

SWBAT: Explain classroom policies and procedures.

AGENDA
Bellwork

You will be doing this every day.

Policies & Procedures
(20 minutes)

Intro. Quick Daily
(5 minutes)

Expectations (20 minutes)

Speedtalk

Strategies (15 minutes)

Peace/Out (5 minutes)

RELATIONSHIPS



“A hero is someone who understands the RELATIONSHIPS that comes with his freedom.”

Bob Dylan (musician, activist)

Quickwrite JOURNAL *Pick 1. At least 25 words. Complete sentences.*

- For what are you responsible?
- What is one thing you wish you didn't have as a RELATIONSHIPS? Why?
- What does this quote mean?

Word of the Day VOCABULARY/CORNELL/your sentence
RELATIONSHIPS (n.)

- accountability: the state, fact, or position of being accountable to somebody or for something

August 14-17, 2015

**SWBAT: Explain
classroom policies and
procedures.**



AGENDA

Bellwork (10-15)

**Policies & Procedures
(20 minutes)**

**Intro. Quick Daily
(5 minutes)**

Expectations (20 minutes)

Speedtalk

Strategies (15 minutes)

Peace/Out (5 minutes)

**You need your
planner-
EVERY CLASS**

UPCOMING- EVEN DAY

8/14

Policies and Procedures

8/18

Still More Policies and Procedures

Article of the Week begins

8/20

“You are Your Words” micrography project begins

Article of the Week reflection practice due

AoW assignment #1

8/24

AoW assignment #1 DUE

“You are Your Words” project continues

8/26

“You are Your Words” project continues

8/28

“You are Your Words” project DUE

Censorship project begins

August 14-17, 2015

SWBAT: Explain
classroom policies and
procedures.



UPCOMING-B-Day

8/15

Policies and Procedures

8/19

Still More Policies and Procedures

8/21

You are Your Words project begins

8/25

You are Your Words project continues

Article of Week begins

8/28

You are your Words project completed

AGENDA
Bellwork (10-15)

You need your
planner-
EVERY CLASS

Policies & Procedures
(20 minutes)

Intro. Quick Daily
(5 minutes)

Expectations (20 minutes)

Speedtalk

Strategies (15 minutes)

Peace/Out (5 minutes)

RELATIONSHIPS

Big Question



What is something you are responsible for in this classroom?

Bigger Question

What role should the teacher play?



Five minutes of discussion

August 14-15

We'll have a question almost every day in beginning...

SWBAT: Expectations, policies and procedures

AGENDA

Bellwork (10-15 minutes)

Policies & Procedures (20 minutes)

Intro. Quick Daily (5 minutes)

Expectations (20 minutes)

Speedtalk

Strategies (15 minutes)

Peace/Out (5 minutes)

August 14-17, 2015

SWBAT: Explain classroom policies and procedures.

AGENDA

Bellwork (10-15 minutes)

Policies & Procedures
(20 minutes)

Intro. Quick Daily
(5 minutes)

Expectations (20 minutes)

Speedtalk

Strategies (15 minutes)

Peace/Out (5 minutes)



RELATIONSHIPS

Strategies

Name _____

Date _____

Period _____

The purpose of this questionnaire is to help you to understand both your learning strengths and areas of difficulty so that you can work on improving those areas where you have difficulties.

It also helps me know how to help you.

Read each statement and then write:

Y for YES if it always applies to you.

S for SOMETIMES if it applies to you sometimes.

N for NO if it never applies to you.

ORGANIZATION

Time Management

_____ I don't use a planner or calendar.

_____ I don't keep track of tests and assignments.

_____ I have trouble getting to class.

_____ I have difficulty setting goals.

Materials Management

_____ I don't keep a separate notebook for each class.

_____ I forget to bring things I need to class.

_____ I forget to bring home things that I need for studying or for homework.

TEST TAKING

_____ I get extremely nervous when I take a test.

_____ I have difficulty completing tests on time.

_____ I don't read directions or questions carefully.

_____ I have difficulty understanding multiple choice questions.

_____ I have difficulty with true/false tests.

_____ I have difficulty with essay tests.

_____ During a test, I have difficulty remembering what I studied.

STUDY SKILLS

_____ I find it hard to start studying.

_____ I can't stay focused when I study.

_____ I'm easily distracted by things that happen around me when I study.

_____ I have difficulty studying from my notes.

_____ I have difficulty studying from books.

_____ I don't know how to organize information from books and notes.

_____ I have difficulty remembering information for tests.

NOTE TAKING

August 14-17, 2015

SWBAT: Explain
policies and p

You will do this
each class...

RELATIONSHIPS

Write on a piece of scratch paper
Name/Date

AGENDA

Bellwork (10-15 minutes)

Policies & Procedures
(20 minutes)

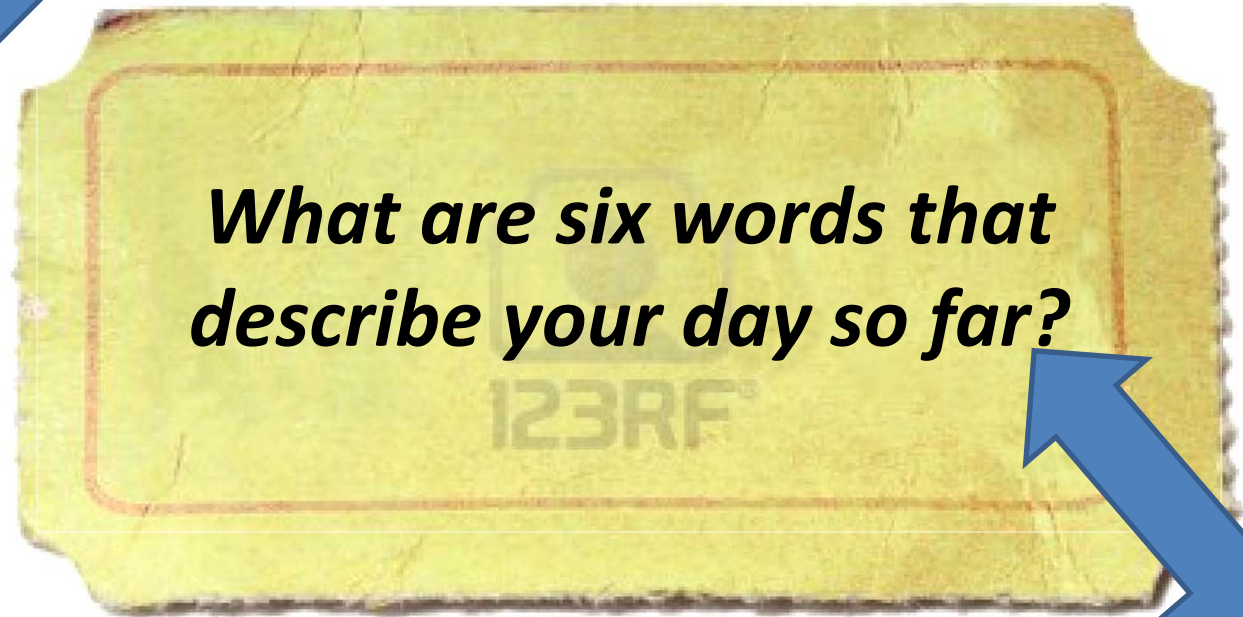
Intro. Quick Daily
(5 minutes)

Expectations (20 minutes)

Speedtalk

Strategies (15 minutes)

Peace/Out (5 minutes)



What type of sentence is that?



RELATIONSHIPS

August 14-17, 2015

**SWBAT: Explain
classroom policies
and procedures.**

AGENDA

AGENDA

Bellwork (10-15 minutes)

**Policies & Procedures
(20 minutes)**

**Intro. Quick Daily
(5 minutes)**

Expectations (20 minutes)

Speedtalk

Strategies (15 minutes)

Peace/Out (5 minutes)

**WHAT ARE THESE
WORDS?**

DUNPO

VEEAL

STYZE

GEJROG